



2010 CJW STATE SPELLING BEE

Saturday May 15, 2010

1:00 p.m.

Brownstone Intermediate School

314 Main Street, Portland

Sponsored by Glastonbury Junior Women's Club

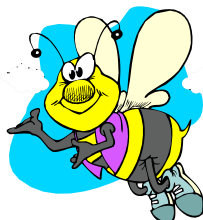
For Clubs sponsoring participants:

1. Please forward names of winner & runner up along with their addresses & phone numbers – as soon as possible but no later than April 30, 2010 to Elizabeth Tischio & Glastonbury Juniors at the email addresses below.
2. Completed Participant forms must be returned to Elizabeth Tischio by applicants no later than 4/30/2010 – see enclosed form.
3. Registration is between 12-12:30 p.m. – Bee starts promptly at 1 p.m.
4. Volunteers are needed the day of the bee, please contact Glastonbury Juniors.

For Additional Information Contact:

Elizabeth Tischio
CJW Education Chair
(860) 349-3065
johntischio@prudentialct.com

Spelling Bee Co-Chairs:
Lisa Furbush & Nicki Campbell *
*(860) 659-8350 – please no calls after 9 p.m.
glastonburyjuniors@yahoo.com



DIRECTIONS TO BROWNSTONE INTERMEDIATE SCHOOL:

From Hartford (I-91):

Follow 91 S to RTE 9S take exit 22s on the LEFT toward Middletown/Old Saybrook.

Turn RIGHT onto CT-17/St John's Sq. Continue to follow CT-17 over the Arrigoni Bridge- CT-17 becomes Main St/CT-17A. Go straight onto Main Street (17A) school is approximately .3 mile on left side

From New Haven (from I-91):

Follow 91N -Take the CT-9 exit 22N-S, toward New Britain/Middletown. Merge onto CT-9 S via exit 22S toward Middletown. Turn RIGHT onto CT-17/St John's Sq. Continue to follow CT-17 over the Arrigoni Bridge- CT-17 becomes Main St/ CT-17A. Go straight onto Main Street (17A) school is approximately .3 mile on left side.

From Waterbury (from I-84):

Follow I-84 E toward Hartford. Merge onto I-691 E via exit 27 toward Meriden. I-691 E becomes CT-66 E.

(follow approx for 6 miles thru Middletown.) Turn LEFT onto Main St/ CT-66. Turn SLIGHT LEFT onto Main St/ CT-17/ CT-66. (over Arrigoni Bridge) Continue to follow CT-17/ CT-66. CT-17 becomes Main St/ CT-17A. Go straight onto Main Street (17A) school is approximately .3 mile on left side.